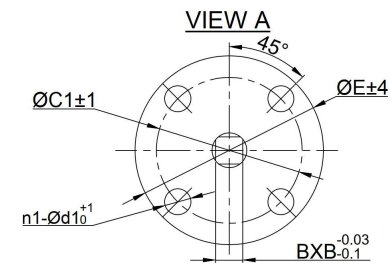
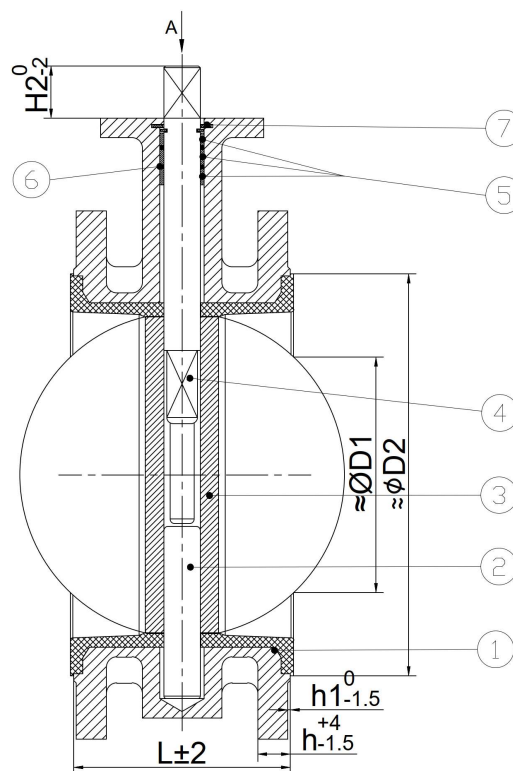
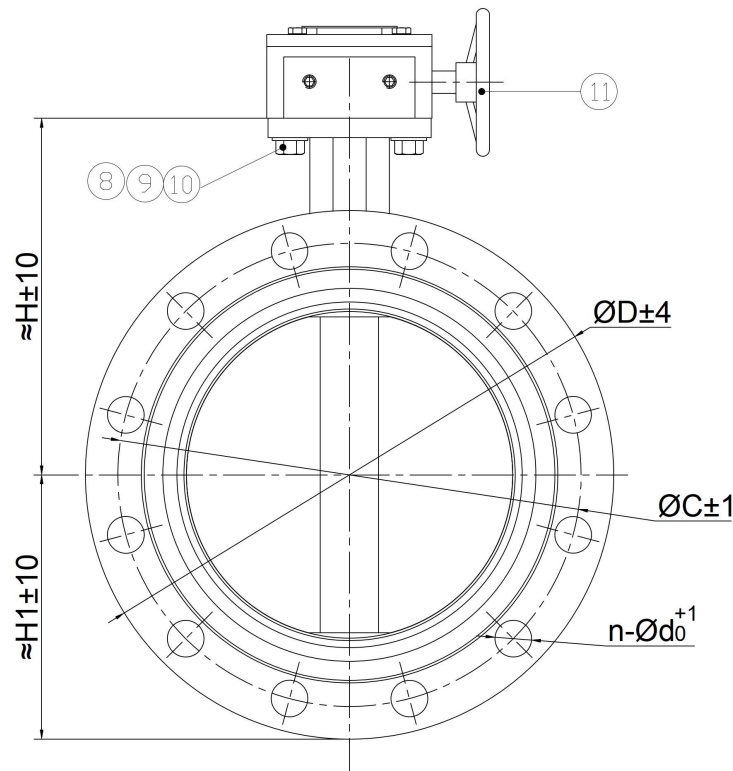



DN	L	ØD		ØC		n-Ød		≈H		≈H1		h		h1	Top Flange	ØE	ØC1	n1-Ød1	BxB	H2	≈ØD1	≈ØD2	Bareshaft Torque, no SF (Nm)		Bareshaft Weight (kg)	
		PN10	PN16	PN10	PN16	PN10	PN16	PN10	PN16	PN10	PN16	PN10	PN16										PN10	PN16		
50	108	165	125	4-Ø19		128	83	18		3	F05	65	50	4-Ø8	9X9	28	-	94	14	15	≈5.2	≈5.3				
65	112	185	145	4-Ø19		136	93	18		3	F05	65	50	4-Ø8	9X9	28	-	110	16	17	≈6.1	≈6.1				
80	114	200	160	8-Ø19		147	100	19		3	F05	65	50	4-Ø8	9X9	28	-	125	22	23	≈7.2	≈7.3				
100	127	220	180	8-Ø19		154	110	19		3	F07	90	70	4-Ø10	11X11	28	-	150	38	40	≈9.3	≈9.2				
125	140	250	210	8-Ø19		177	125	19		3	F07	90	70	4-Ø10	14X14	28	-	175	58	62	≈12.8	≈12.8				
150	140	285	240	8-Ø23		198	142	19		3	F07	90	70	4-Ø10	14X14	28	67.9	203	94	102	≈16.2	≈16.1				
200	152	340	295	8-Ø23	12-Ø23	226	227	170		20	F10	125	102	4-Ø12	17x17	25	133.9	254	173	192	≈24.4	≈23.9				
250	165	395	405	350	355	12-Ø23	12-Ø28	273	198	202	22	3	F10	125	102	4-Ø12	22x22	27	189.3	309	286	323	≈32.9	≈34.6		
300	178	445	460	400	410	12-Ø23	12-Ø28	308	223	230	24.5	4	F10	125	102	4-Ø12	22x22	30	244.7	361	429	490	≈45.1	≈47.1		
350	190	505	520	460	470	16-Ø23	16-Ø28	323	324	252	260	24.5	26.5	4	F10	125	102	4-Ø12	22x22	35	274.7	420	550	625	≈67.1	≈70.1



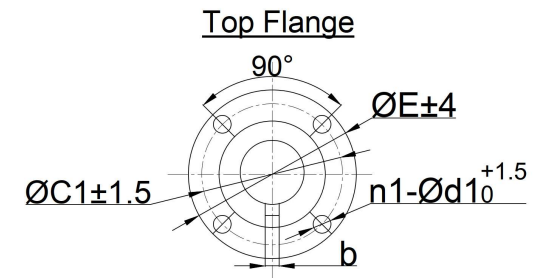
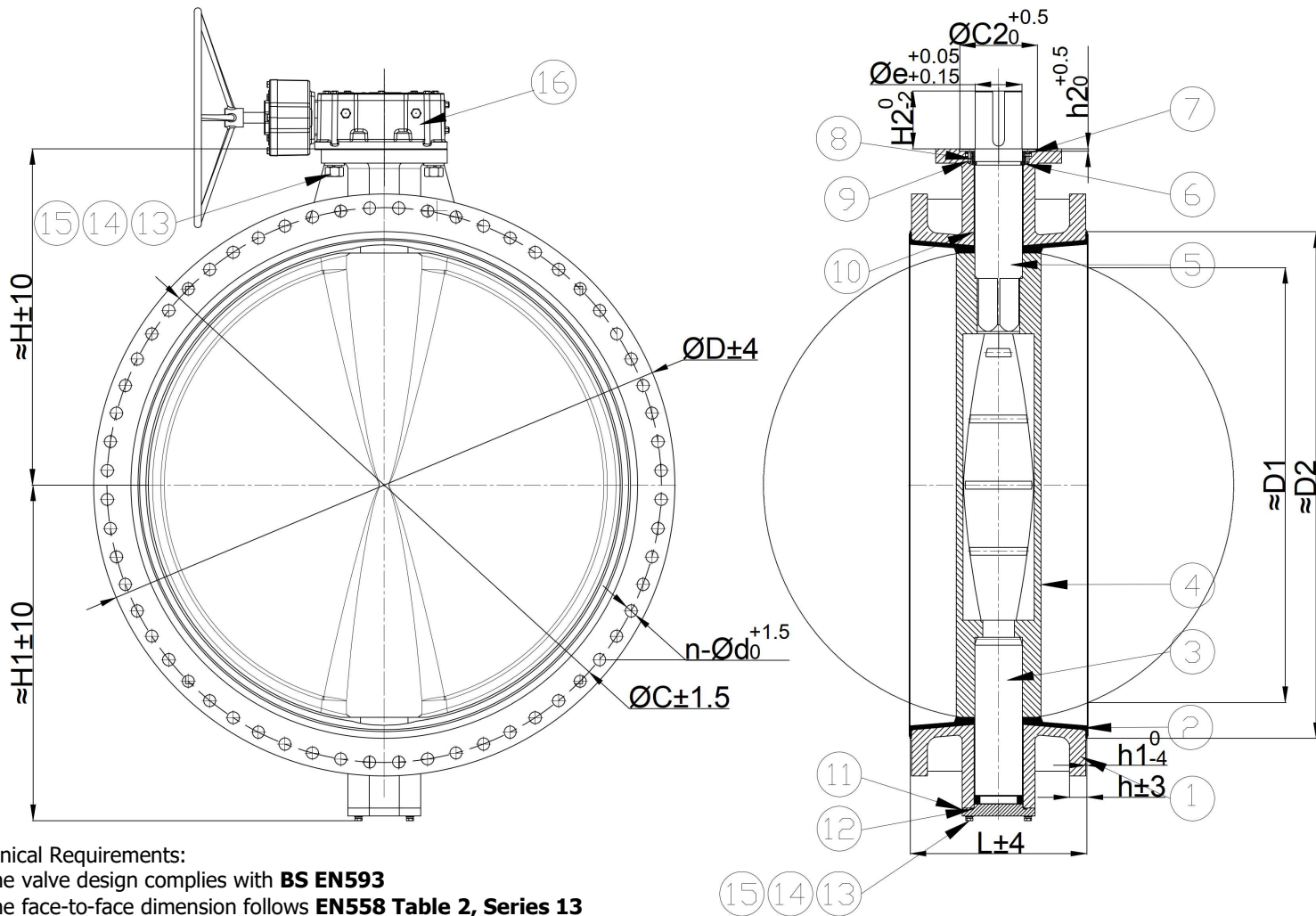
ITEM	PART NAME	MATERIAL
1	Body	Ductile Iron + EPDM
2	Bottom Shaft	SS420
3	Disc	CF8M
4	Top Shaft	SS420
5	Sleeve Bushing	PTFE
6	O Ring	EPDM
7	Retaining Ring	35#
8	Bolts	SS304
9	Spring Washers	SS304
10	Flat Washers	SS304
11	IP68 Gearbox	Ductile Iron

Technical Requirements:

- The valve design complies with **BS EN593**
- The face-to-face dimension follows **EN558 Table 2, Series 13**
- The end flange drilling is in accordance with **EN1092-2 PN10/16**; while the top flange drilling is accordance with **ISO 5211**
- The hydraulic test is conducted in compliance with **EN12266-1**
- Valve pressure rating: **10/16 bar**
- Body Test Pressure: **15/24 bar**
- Seat Test Pressure: **11/17.6 bar**
- Temperature: **-10~100°C**
- Suitable Medium: **W.O.G**
- Fusion bonded epoxy (FBE) coating treatment on the valve surface, surface coating thickness  $\geq 250$  microns
- Color: **RAL 5009**

DVF No.:		DVF No.: DVF-BA50-350-PN1016S13GBHWVS-RS			
Cust. No.:		Units: mm		Title:	
 DUTCH VALVE COMPANY Duvalco Valves & Fittings Pte. Ltd.		Scale: N.T.S		Double Flange Concentric Butterfly Valve (BA) DN50-350 PN10/16 Series 13 IP68 Gearbox with Handwheel Vulcanized Seat	
		Drawn	CF		
Checked	Will	30/10/25			
Approved	Eddie	30/10/25			
		Sheet: 1 of 1	Rev: 0		


DN	L	≈H	≈H1	H2	Øe	Top Flange	ØE	ØC1	ØC2	n1-Ød1	h2	b	ØD		ØC		n-Ød		h		h1	≈ØD1	≈ØD2	Bareshaft Torque, no SF (Nm)		Bareshaft Weight (kg)			
													PN10	PN16	PN10	PN16	PN10	PN16	PN10	PN16				PN10	PN16	PN10	PN16	PN10	PN16
400	216	366	314	60	33.15	F14	175	140	100	4-Ø18	4	1-10	565	580	515	525	16-Ø28	16-Ø31	24.5	28.0	4	324.2	460	775	846	≈92.0	≈95.5		
450	222	393	344	60	38.00	F14	175	140	100	4-Ø18	4	1-10	615	640	565	585	20-Ø28	20-Ø31	25.5	30.0	4	380.6	510	1012	1131	≈107.5	≈121.0		
500	229	432	381	60	41.15	F14	175	140	100	4-Ø18	4	1-10	670	715	620	650	20-Ø28	20-Ø34	26.5	31.5	5	435.1	560	1350	1431	≈132.0	≈151.0		
600	267	510	444	70	50.65	F16	210	165	130	4-Ø22	4	1-16	780	840	725	770	20-Ø31	20-Ø37	30.0	36.0	5	528.8	660	2111	2301	≈191.1	≈220.1		



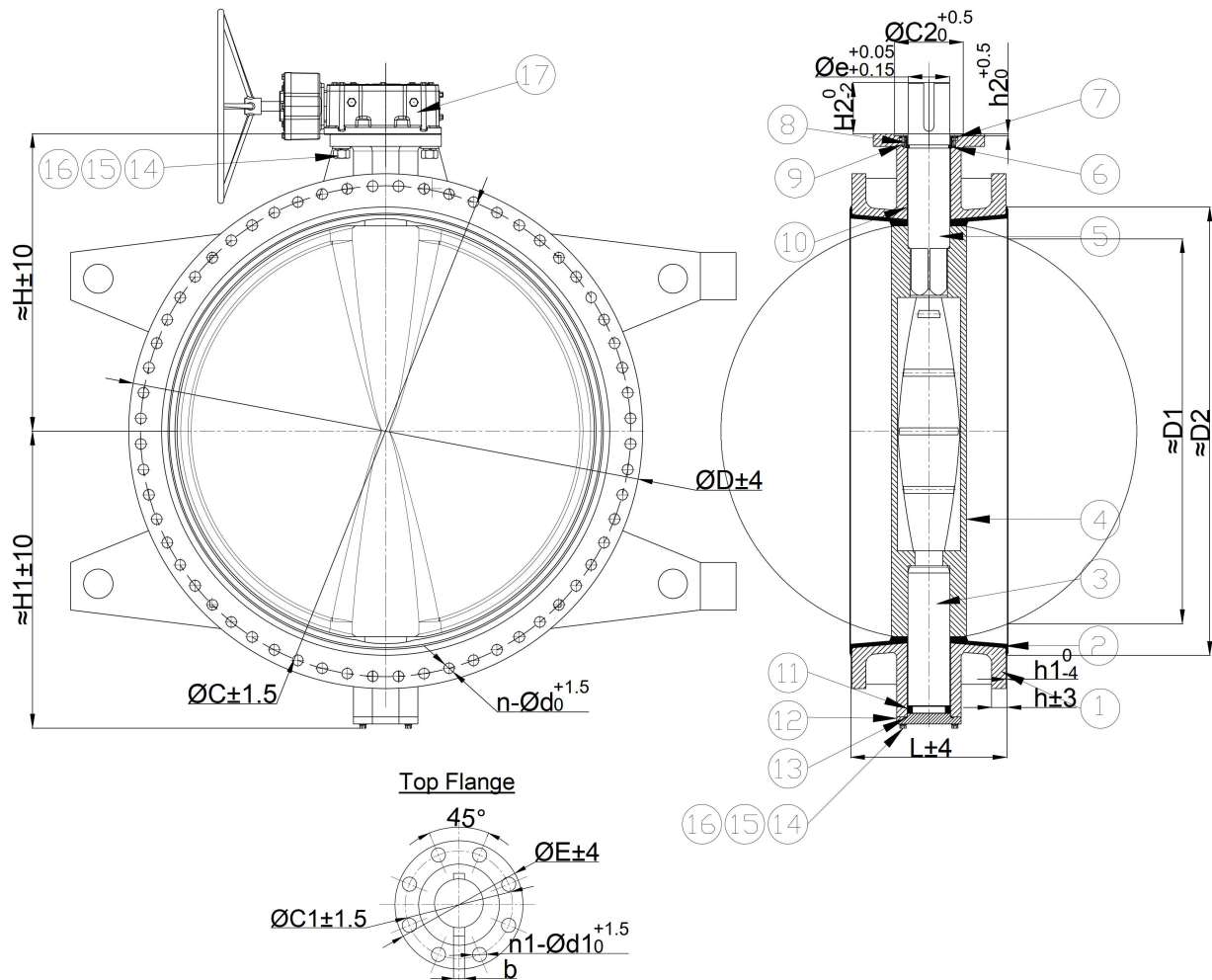
ITEM	PART NAME	MATERIAL
1	Body	Ductile Iron
2	Seat	EPDM
3	Bottom Shaft	SS431
4	Disc	CF8M
5	Top Shaft	SS431
6	Retaining Ring	35#
7	Packing Gland	35#
8	Packing	Graphite
9	Countersunk Screws	SS201
10	Sleeve Bushing	PTFE
11	End Cap	Ductile Iron
12	O Ring	EPDM
13	Bolts	SS304
14	Spring Washers	SS304
15	Flat Washers	SS304
16	Gearbox	Ductile Iron

**Technical Requirements:**

- The valve design complies with **BS EN593**
- The face-to-face dimension follows **EN558 Table 2, Series 13**
- The end flange drilling is in accordance with **EN1092-2 PN10/16**; while the top flange drilling is accordance with **ISO 5211**
- The hydraulic test is conducted in compliance with **EN12266-1**
- Valve pressure rating: **10/16 bar**
- Body Test Pressure: **15/24 bar**
- Seat Test Pressure: **11/17.6 bar**
- Temperature: **-10~100°C**
- Suitable Medium: **W.O.G**
- Fusion bonded epoxy (FBE) coating treatment on the valve surface, surface coating thickness  $\geq 250$  microns
- Color: **RAL 5009**

DVF No.:		DVF No.: DVF-BA400-600-PN1016S13GBHWVS-RS			
Cust. No.:		Units: mm		Title:	
		Scale: N.T.S		Double Flange Concentric Butterfly Valve (BA)	
 DUTCH VALVE COMPANY Duvalco Valves & Fittings Pte. Ltd.		Drawn	CF	30/09/25	DN400-600 PN10/16 Series 13 IP68 Gearbox with Handwheel Vulcanized Seat
		Checked	Will	30/10/25	
		Approved	Eddie	30/10/25	
		Sheet: 1 of 1		Rev: 0	


DN	L	≈H	≈H1	H2	Øe	Top Flange	ØE	ØC1	ØC2	n1-Ød1	h2	b	ØD		ØC		n-Ød		h		h1	≈ØD1	≈ØD2	Bareshaft Torque, no SF (Nm)		Bareshaft Weight (kg)	
													PN10	PN16	PN10	PN16	PN10	PN16	PN10	PN16				PN10	PN16	PN10	PN16
700	292	572	494	85	63.36	F25	300	254	200	8-Ø18	5	2-18	895	910	840	24-Ø31	24-Ø37	32.5	39.5	5	647.2	777	4000	4800	≈298.4	≈295.4	
800	318	627	556	85	63.36	F25	300	254	200	8-Ø18	5	2-18	1015	1025	950	24-Ø34	24-Ø41	35.0	43.0	5	745.0	881	4500	5800	≈375.4	≈393.4	
900	330	684	632	100	75	F25	300	254	200	8-Ø18	5	2-20	1115	1125	1050	28-Ø34	28-Ø41	37.5	46.5	5	816.9	982	5300	7000	≈568.9	≈568.9	
1000	410	745	693	120	85	F25	300	254	200	8-Ø18	5	2-22	1230	1255	1160	1170	28-Ø37	28-Ø44	40.0	50.0	5	891.2	1090	8800	11630	≈664.9	≈688.9
1100	450	813	743	120	95	F30	350	298	230	8-Ø22	5	2-25	1340	1355	1270	32-Ø37	32-Ø44	42.5	53.5	5	988.4	1184	13000	20000	≈794.2	≈795.0	
1200	470	893	815	130	105	F30	350	298	230	8-Ø22	5	2-28	1455	1485	1380	1390	32-Ø41	32-Ø50	45.0	57.0	5	1080.2	1280	14000	20000	≈1107.3	≈1107.3
1300	490	953	903	130	130	F30	350	298	230	8-Ø22	5	2-36	1575	1585	1490	32-Ø42	32-Ø50	46.0	60.0	5	1204.3	1420	29000	37700	≈1291.6	≈1202.8	
1400	530	1008	951	180	140	F35	415	356	260	8-Ø33	5	2-36	1675	1685	1590	36-Ø44	36-Ø50	46.0	60.0	5	1332.3	1496	33330	43000	≈1401.2	≈1334.0	
1500	570	1083	1013	180	150	F35	415	356	260	8-Ø33	5	2-36	1785	1820	1700	1710	36-Ø44	36-Ø57	47.5	62.5	5	1381.0	1633	38200	44300	≈1793.4	≈1748.6
1600	600	1155	1043	200	160	F35	415	356	260	8-Ø33	5	2-40	1916	1930	1820	40-Ø50	40-Ø57	49.0	65.0	5	1487.6	1700	39000	45000	≈2092.0	≈2079.2	
1800	670	1204	1146	260	180	F40	475	406	300	8-Ø38	5	2-45	2115	2130	2020	44-Ø50	44-Ø57	52.0	70.5	5	1675.0	1914	71000	85000	≈2780.2	≈2699.0	
2000	760	1363	1330	280	190	F40	475	406	300	8-Ø38	5	2-45	2325	2345	2230	48-Ø50	48-Ø62	55.0	75.0	5	1854.3	2130	100000	120000	≈3792.0	≈3736.0	



Technical Requirements:

1. The valve design complies with **BS EN593**
2. The face-to-face dimension follows **EN558 Table 2, Series 13**
3. The end flange drilling is in accordance with **EN1092-2 PN10/16**; while the top flange drilling is accordance with **ISO 5211**
4. The hydraulic test is conducted in compliance with **EN12266-1**
5. Valve pressure rating: **10/16 bar**
6. Body Test Pressure: **15/24 bar**
7. Seat Test Pressure: **11/17.6 bar**
8. Temperature: **-10~100°C**
9. Suitable Medium: **W.O.G**
10. Fusion bonded epoxy (FBE) coating treatment on the valve surface, surface coating thickness  $\geq 250$  microns
11. Color: **RAL 5009**

ITEM	PART NAME	MATERIAL
1	Body	Ductile Iron
2	Seat	EPDM
3	Bottom Shaft	SS431
4	Disc	CF8M
5	Top Shaft	SS431
6	Retaining Ring	35#
7	Packing Gland	35#
8	Packing	Graphite
9	Countersunk Screws	SS201
10	Sleeve Bushing	PTFE
11	Bearing	-
12	End Cap	Ductile Iron
13	O Ring	EPDM
14	Bolts	SS304
15	Spring Washers	SS304
16	Flat Washers	SS304
17	Gearbox	Ductile Iron

DVF No.:		DVF No.: DVF-BA700-2000-PN1016S13GBHWVS-RS			
Cust. No.:		Units: mm		Title:	
		Scale: N.T.S		Double Flange Concentric Butterfly Valve (BA)	
 DUTCH VALVE COMPANY Duvalco Valves & Fittings Pte. Ltd.		Drawn	CF	30/09/25	DN700-2000 PN10/16 Series 13 IP68 Gearbox with Handwheel Vulcanized Seat
		Checked	Will	30/10/25	
		Approved	Eddie	30/10/25	
		Sheet: 1 of 1		Rev: 0	