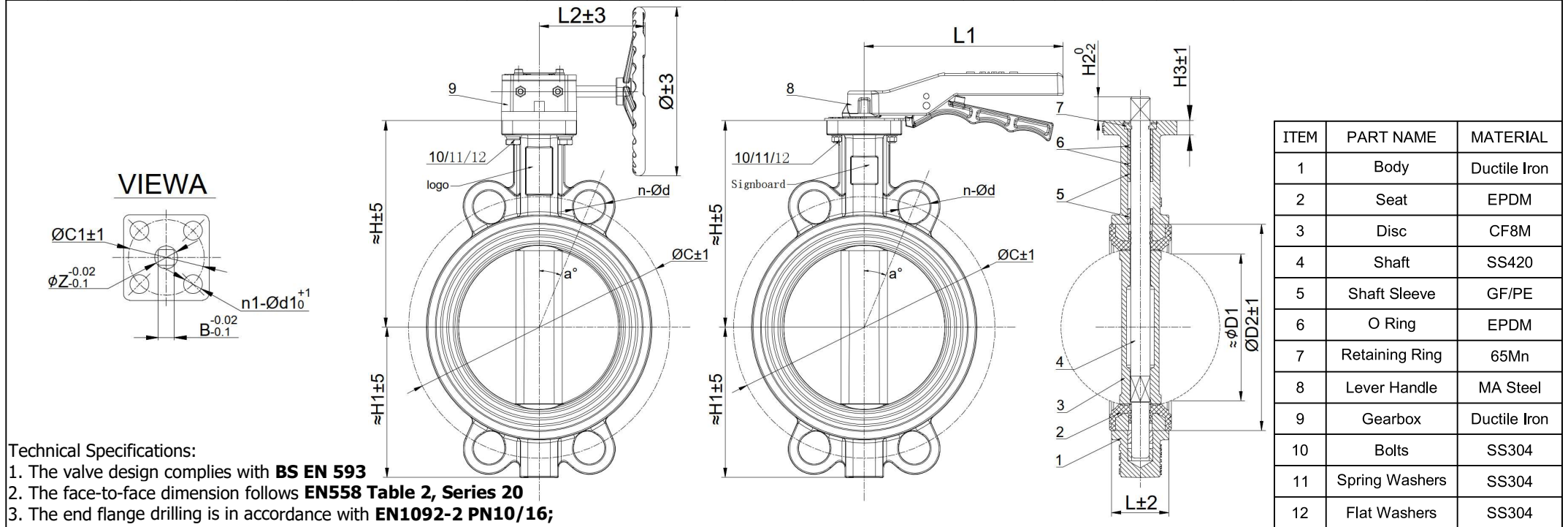



DN	L	≈H	≈H1	≈ØD1	ØD2	Top Flange	ØC1	n1-Ød1	B	ØZ	H2	ØC		n-Ød		a°		H3	L1	L2	Ø	Gearbox Model No.	Gear-box Ratio	Bareshaft Torque without Safety Factor (Nm)	Bareshaft Estimated Weight (kg)
												PN10	PN16	PN10	PN16	PN10	PN16								
50	43	131	77	30	84	F05	50	4-Ø8	9X9	12	28	125		4-Ø19		45		12	180	160	147	C15	30	15	2.1
65	46	138	91	46	100	F05	50	4-Ø8	9X9	12	28	145		4-Ø19		45		12	180	160	147	C15	30	17	2.6
80	46	156	97	64	113	F05	50	4-Ø8	9X9	12	28	160		4-Ø19		22.5		12	180	160	147	C15	30	23	2.9
100	52	168	116	91	143	F07	70	4-Ø10	11X11	14	28	180		4-Ø19		22.5		13	225	190	147	C15	30	40	4.2
125	56	184	133	110	167	F07	70	4-Ø10	14X14	18	28	210		4-Ø19		22.5		14	260	190	147	C15	30	62	6.0
150	56	197	147	137	197	F07	70	4-Ø10	14X14	18	28	240		4-Ø23		22.5		14	260	190	147	C15	30	102	6.9
200	60	238	180	194	247	F10	102	4-Ø12	17X17	22.1	33	295		4-Ø23		22.5	15	15	-	220	217	C50	40	192	11.3
250	68	269	212	241	302	F10	102	4-Ø12	22X22	28.5	33	350	355	4-Ø23	4-Ø28	15		17	-	260	217	C50	40	320	16.9
300	78	308	240	292	352	F10	102	4-Ø12	22X22	30	33	400	410	4-Ø23	4-Ø28	15		17	-	270	267	C120	40	490	23.7
350	78	338	280	325	410	F10	102	4-Ø12	22X22	30	33	460	470	4-Ø23	4-Ø28	11.3		17	-	270	267	C120	40	625	31.8



ITEM	PART NAME	MATERIAL
1	Body	Ductile Iron
2	Seat	EPDM
3	Disc	CF8M
4	Shaft	SS420
5	Shaft Sleeve	GF/PE
6	O Ring	EPDM
7	Retaining Ring	65Mn
8	Lever Handle	MA Steel
9	Gearbox	Ductile Iron
10	Bolts	SS304
11	Spring Washers	SS304
12	Flat Washers	SS304

Technical Specifications:

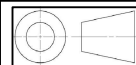
- The valve design complies with **BS EN 593**
- The face-to-face dimension follows **EN558 Table 2, Series 20**
- The end flange drilling is in accordance with **EN1092-2 PN10/16**; while the top flange drilling is accordance with **ISO 5211**
- The hydraulic test is conducted in compliance with **EN12266-1**
- Valve pressure rating: **10/16 bar**
- Body Test Pressure: **15/24 bar**
- Seat Test Pressure: **11/17.6 bar**
- Temperature: **-10~100°C**
- Suitable Medium: **W.O.G**
- FBE coating treatment on the valve surface, surface coating thickness ≥250 microns



DUVALCO
DUTCH VALVE COMPANY

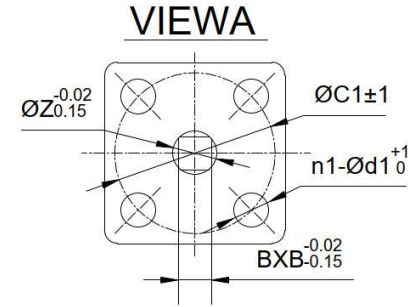
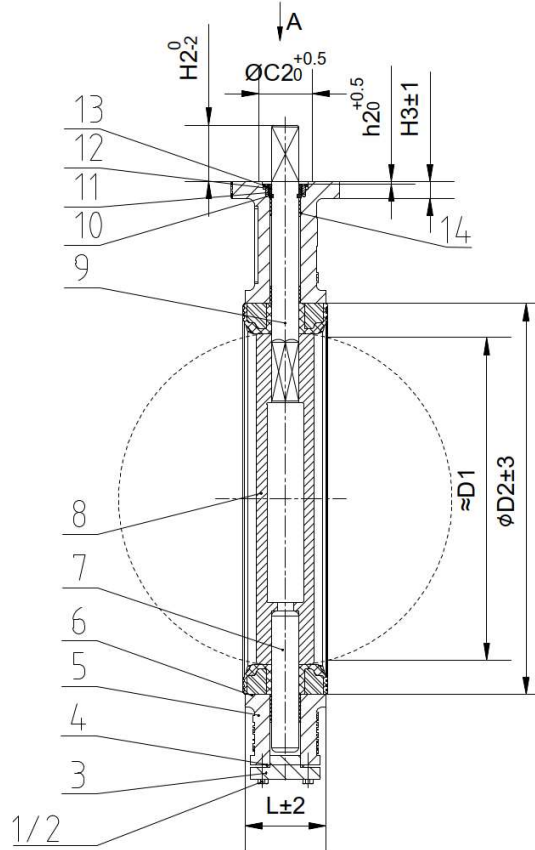
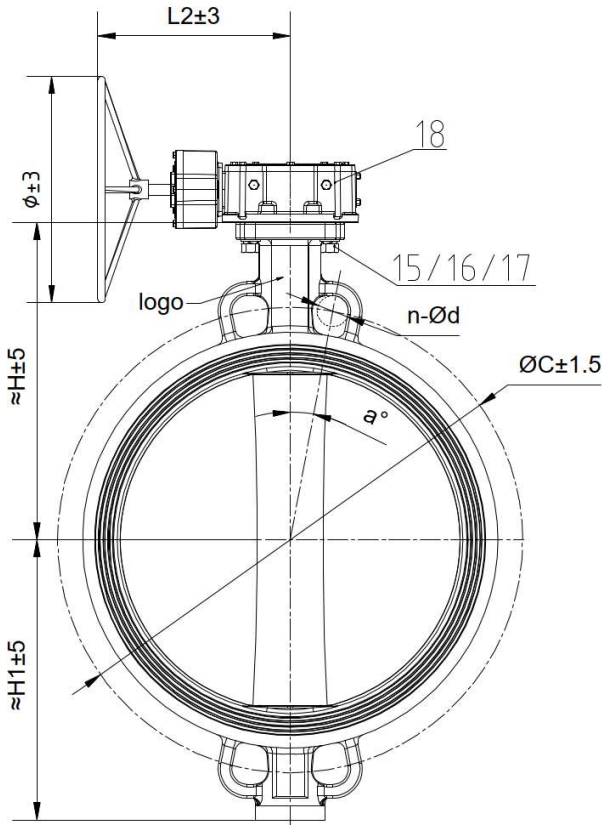
Duvalco Valves & Fittings Pte. Ltd.

DWG No.: DVF-MSJ50-350-PN1016S20LVGBHWVS-RS

	Units: mm	Title: Concentric Wafer Type Butterfly Valve (MSJ)
	Scale: N.T.S	
Drawn	CF	24/01/26
Checked	Will	03/02/26
Approved	Eddie	03/02/26

DN50-350 PN10/16 Series 20 Lever/IP68 Gearbox & Handwheel Vulcanized Seat	Sheet: 1 of 1	Rev: 0
---	---------------	--------

DN	L	≈H	≈H1	≈ØD1	ØD2	Top Flange	ØC1	ØC2	h2	n1-Ød1	BXB	ØZ	H2	ØC		n-Ød		a°		H3	L2	Ø	Gearbox Model No.	Gearbox Ratio	Bareshaft Torque without Safety Factor (Nm)	Bareshaft Estimated Weight (kg)
														PN10	PN16	PN10	PN16	PN10	PN16							
400	86	390	328	381	454	F14	140	100	3	4-Ø18	27X27	33	35	515	525	4-Ø28	4-Ø31	11.25	17	320	280	LZ15	135	846	49.8	
450	105	407	355	429	504	F14	140	100	3	4-Ø18	27X27	36	35	565	585	4-Ø28	4-Ø31	9	17	320	280	LZ20	133	1370	64.9	



ITEM	PART NAME	MATERIAL
1	Bolts	SS304
2	Flat Washers	SS304
3	End Cap	Ductile Iron
4	O Ring	EPDM
5	Body	Ductile Iron
6	Seat	EPDM
7	Bottom Shaft	SS420
8	Disc	CF8M
9	Upper Shaft	SS420
10	Retaining Ring	201
11	Packing	EPDM
12	Packing Gland	201
13	Countersunk Screws	SS304
14	Shaft Sleeve	GF/PE
15	Bolts	SS304
16	Spring Washers	SS304
17	Flat Washers	SS304
18	Gearbox	Ductile Iron

Technical Specifications:

- The valve design complies with **BS EN 593**
- The face-to-face dimension follows **EN558 Table 2, Series 20**
- The end flange drilling is in accordance with **EN1092-2 PN10/16**; while the top flange drilling is accordance with **ISO 5211**
- The hydraulic test is conducted in compliance with **EN12266-1**
- Valve pressure rating: **10/16 bar**
- Body Test Pressure: **15/24 bar**
- Seat Test Pressure: **11/17.6 bar**
- Temperature: **-10~100°C**
- Suitable Medium: **W.O.G**
- FBE coating treatment on the valve surface, surface coating thickness ≥ 250 microns

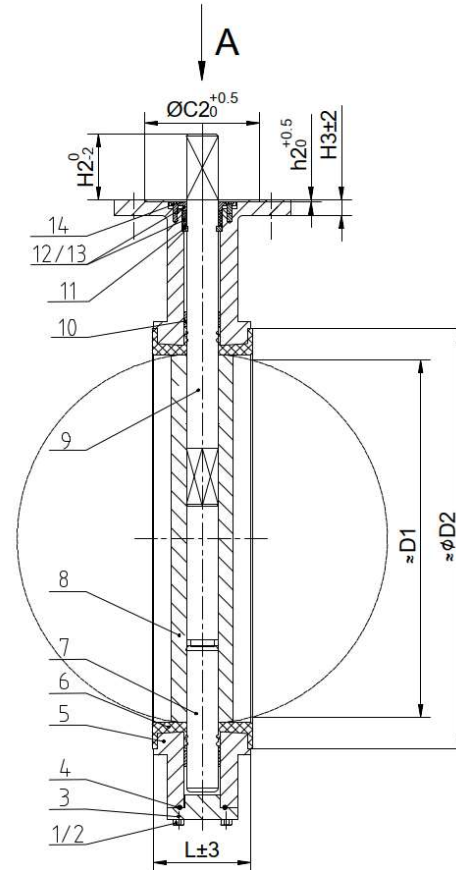
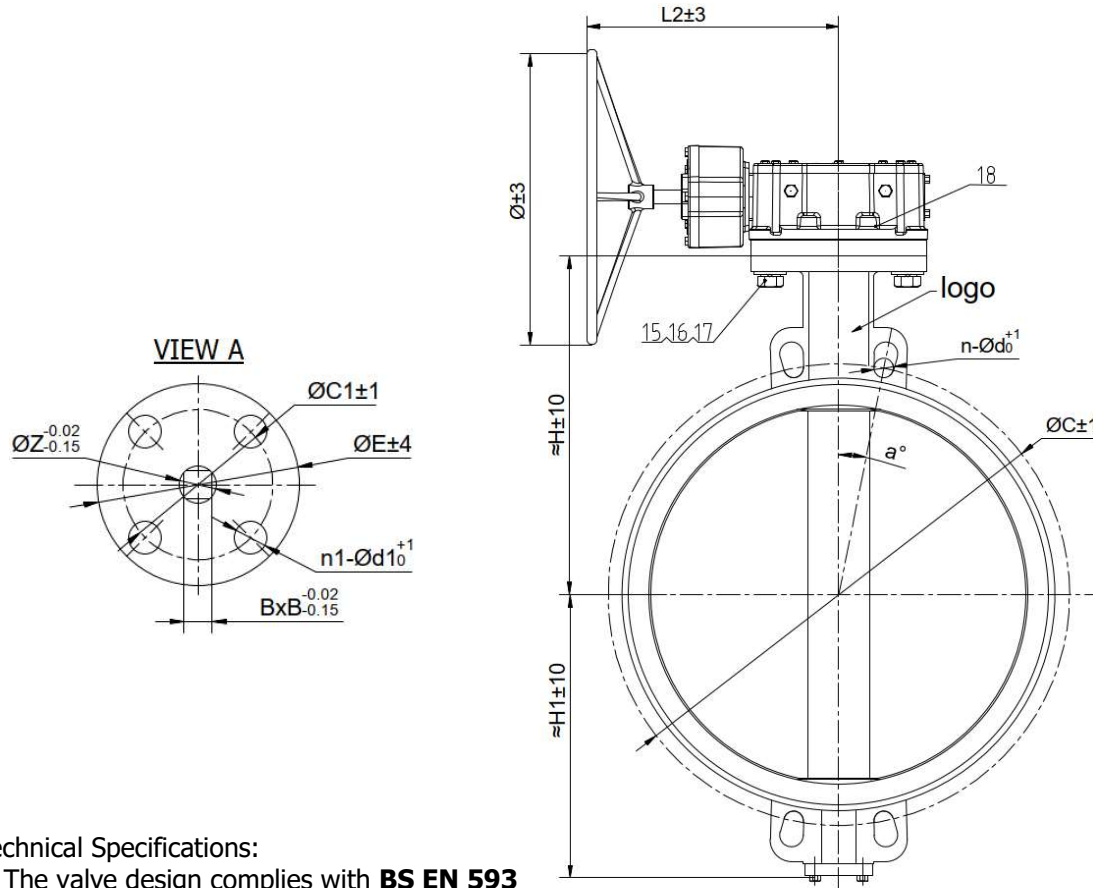


Duvalco Valves & Fittings Pte. Ltd.

DWG No.: DVF-LT400-450-PN1016S20GBHWVS-RS

	Units: mm	Title:	
	Scale: N.T.S	Concentric Wafer Type Butterfly Valve (MSJ)	
Drawn	CF	24/01/26	DN400-450 PN10/16 Series 20
Checked	Will	03/02/26	IP68 Gearbox & Handwheel
Approved	Eddie	03/02/26	Vulcanized Seat
			Sheet: 1 of 1
			Rev: 0

DN	L	≈H	≈H1	≈ØD1	ØD2	Top Flange	ØC1	ØC2	ØE	h2	n-Ød1	BxB	ØZ	H2	ØC		n-Ød		a°		H3	L2	Ø	Gear-box Model No.	Gear-box Ratio	Bareshaft Torque without Safety Factor (Nm)	Bareshaft Estimate d Weight (kg)
															PN10	PN16	PN10	PN16	PN10	PN16							
500	127	452	334	476	558	F14	140	100	175	4	4-Ø18	32X32	41	45	620	650	4-Ø28	4-Ø34	9	25	370	280	LZ20	133	1431	88.0	
550	154	500	411	522	619	F14	140	100	175	4	4-Ø18	36X36	49	50	675	710	4-Ø30	4-Ø33	9	25	370	280	LZ30	184	2850	118.0	
600	154	533	412	573	656	F16	165	130	210	4	4-Ø22	36X36	49	55	725	770	4-Ø31	4-Ø37	9	27	370	385	LZ30	184	2850	149.0	



ITEM	PART NAME	MATERIAL
1	Bolts	SS304
2	Flat Washers	SS304
3	End Cap	Ductile Iron
4	O Ring	EPDM
5	Body	Ductile Iron
6	Seat	EPDM
7	Bottom Shaft	SS420
8	Disc	CF8M
9	Upper Shaft	SS420
10	Retaining Ring	201
11	Shaft Sleeve	GF/PE
12	Packing	EPDM
13	Packing Gland	201
14	Countersunk Screws	SS304
15	Bolts	SS304
16	Spring Washers	SS304
17	Flat Washers	SS304
18	Gearbox	Ductile Iron

Technical Specifications:

- The valve design complies with **BS EN 593**
- The face-to-face dimension follows **EN558 Table 2, Series 20**
- The end flange drilling is in accordance with **EN1092-2 PN10/16**; while the top flange drilling is accordance with **ISO 5211**
- The hydraulic test is conducted in compliance with **EN12266-1**
- Valve pressure rating: **10/16 bar**
- Body Test Pressure: **15/24 bar**
- Seat Test Pressure: **11/17.6 bar**
- Temperature: **-10~100°C**
- Suitable Medium: **W.O.G**
- FBE coating treatment on the valve surface, surface coating thickness ≥ 250 microns

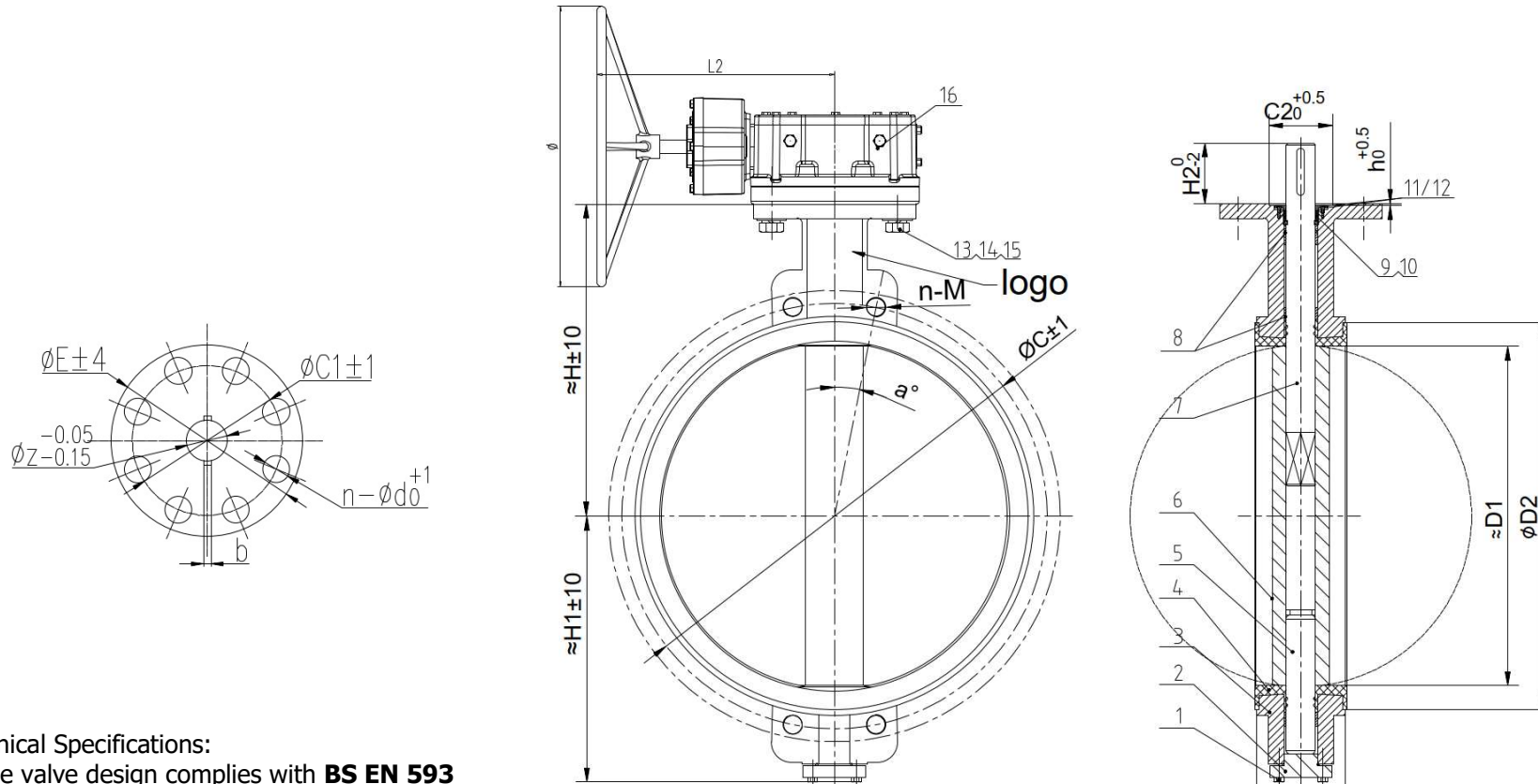


Duvalco Valves & Fittings Pte. Ltd.

DWG No.: DVF-MSJ500-600-PN1016S20GBHWVS-RS

	Units: mm	Title:	
	Scale: N.T.S	Concentric Wafer Type Butterfly Valve (MSJ)	
Drawn	CF	24/01/26	DN500-600 PN10/16 Series 20
Checked	Will	03/02/26	IP68 Gearbox & Handwheel
Approved	Eddie	03/02/26	Vulcanized Seat
			Sheet: 1 of 1
			Rev: 0

DN	L	≈H	≈H1	≈D1	ØD2	Top Flange	ØC1	ØC2	ØE	h	n-Ød	b	ØZ	H2	ØC		N-M		a°		L1	Ø	Gear-box Model No.	Gear-box Ratio	Bareshaft Torque without Safety Factor (Nm)	Bareshaft Estimated Weight (kg)
															PN10	PN16	PN10	PN16	PN10	PN16						
700	165	540	490	676.2	762	F25	254	200	300	5	8-Ø18	2-18	63	85	840	4-M27	4-M33	7.5	339	500	LZ80	220	5600	221.0		
800	190	610	550	773.6	915	F25	254	200	300	5	8-Ø18	2-18	63	85	950	4-M30	4-M36	7.5	339	500	LZ80	220	7000	279.0		
900	203	670	610	839.1	970	F25	254	200	300	5	8-Ø18	2-20	75	100	1050	4-M30	4-M36	6.428	496	600	LZ160	470	7800	367.0		
1000	216	740	675	940.5	1050	F25	254	200	300	5	8-Ø18	2-22	85	120	1160	1170	4-M33	4-M39	6.428	496	600	LZ160	470	13400	447.0	
1200	254	860	784	1139.8	1285	F30	298	230	350	5	8-Ø22	2-28	105	130	1380	1390	4-M36	4-M45	5.625	564	700	LZ240	720	20000	646.0	



ITEM	PART NAME	MATERIAL
1	Bolts	SS304
2	End Cap	Ductile Iron
3	Body	Ductile Iron
4	Seat	EPDM
5	Bottom Shaft	SS431
6	Disc	CF8M
7	Upper Shaft	SS431
8	Shaft Sleeve	GF/PE
9	Retaining Ring	35#
10	Packing	EPDM
11	Countersunk Screws	SS304
12	Packing Gland	201
13	Bolts	SS304
14	Spring Washers	SS304
15	Flat Washers	SS304
16	Gearbox	Ductile Iron

Technical Specifications:

- The valve design complies with **BS EN 593**
- The face-to-face dimension follows **EN558 Table 2, Series 20**
- The end flange drilling is in accordance with **EN1092-2 PN10/16**; while the top flange drilling is accordance with **ISO 5211**
- The hydraulic test is conducted in compliance with **EN12266-1**
- Valve pressure rating: **10/16 bar**
- Body Test Pressure: **15/24 bar**
- Seat Test Pressure: **11/17.6 bar**
- Temperature: **-10~100°C**
- Suitable Medium: **W.O.G**
- FBE coating treatment on the valve surface, surface coating thickness ≥ 250 microns



Duvalco Valves & Fittings Pte. Ltd.

DWG No.: DVF-MSJ700-1200-PN1016S20GBHWVS-RS

	Units: mm	Title:	
	Scale: N.T.S	Concentric Wafer Semi Lug Type Butterfly Valve (MSJ)	
Drawn	CF	24/01/26	DN700-1200 PN10/16 Series 20
Checked	Will	03/02/26	IP68 Gearbox & Handwheel
Approved	Eddie	03/02/26	Vulcanized Seat
			Sheet: 1 of 1
			Rev: 0